

Your TECHNOLOGY JEWEL

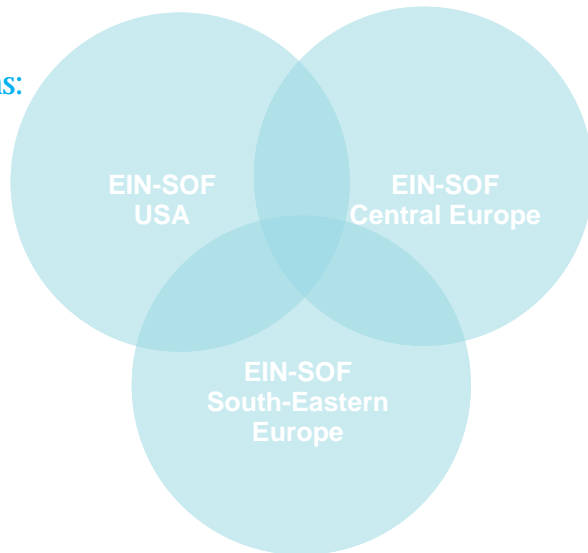


EIN·SOF

Our VISION is to be precious technology partner to clients worldwide especially in the areas of:

Automotive Software Development
Healthcare systems
Document Management systems
Enterprise Collaboration systems
Digital Media Communications

Locations:



USA: Los Angeles

Central Europe: Düsseldorf (D)
Berlin (D)
Paris (F)

South-Eastern Europe: Skopje (MK)





18 years on the market
Team of 150 and growing with:

Strong Project Management competencies
Formal methodology of work
Diversified international team
95% College degrees
15% Higher Professional degrees
100% Multilingual Team

Quality standards exercised:

ISO 9001/2000
IT Mark
CMMI Level 2
CMMI Level 3 target for 2011

Business philosophy:

Highest quality
Most competitive price
Anticipate our clients client's needs
Trustworthiness
Maximum Flexibility
Maximum Reliability



EIN-SOF Automotive

Providing software solutions for automotive industry in field of Diagnostics, Authoring Data for Diagnostics, Simulations, Periodical Inspection, Automotive Embedded and Automotive Design. In cooperation with SPX Service Solutions:

Diagnostics

CLIP - Renault, Samsung Motors, Dacia
CONSULT III - Nissan
HONDA RT - Honda

Authoring Tools

Renault, Honda

Periodical Inspection

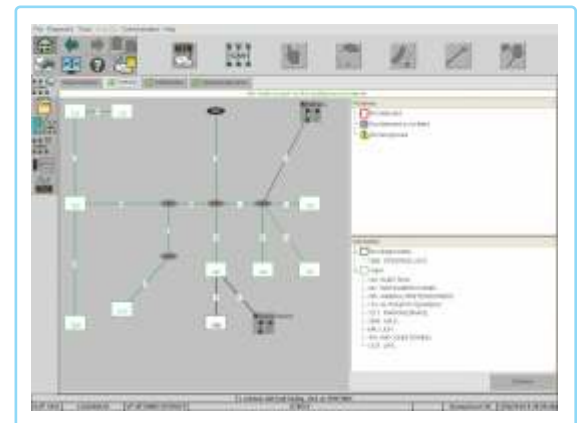
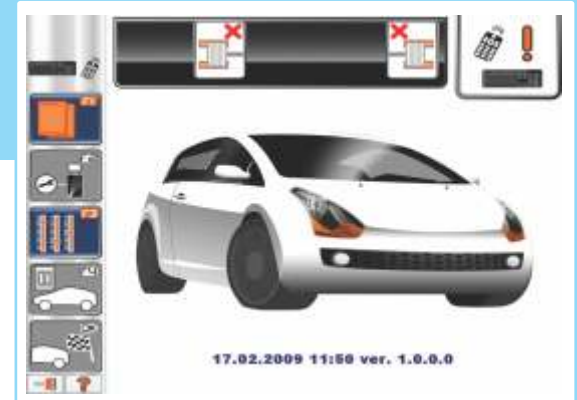
UK, France, Italy, Iran (EURO 5, MCTCNET2)

Simulation

All OEM ECU, Protocol and Network Simulation

Development platforms

C&C++; JAVA 1.6 J2EE; .NET c#





EIN-SOF Automotive

Diagnostic Features

- Data Recording
- Final Check
- Vehicle Identification
- Reprogramming
- Wiring Diagrams
- Feature Based Diagnostics
- Multiplex Network Testing, CAN Network Test
- Dialogs3000
- Diagnostic Files
- Workshop ERP Integration
- Expert Mode

Diagnostic Protocols

- KWP2000 On Can
- KWP2000 On K Line
- ISO UDS On Can (DiagOnCan)

Enhanced Diagnostics on K-Line

- Enhanced Diagnostics on CAN (DiagOnCan)

ISO OBD on KWP2000 K-Line

- ISO OBD on 9141 K-Line
- ISO OBD on CAN
- ISO RAW CAN

Automotive Embedded

EIN-SOF has expertise in developing embedded solutions.

These competencies, coupled with team of experienced professionals and quality assurance meeting the automotive industry extremely high standards.

Automotive Design

Developing design of the vehicle interior proportions, shape, placement, and surfaces for the instrument panel, seats, door trim panels, headliner, and pillar trims, etc.

Using Catia for Computer-Aided Design (CAD), Finite Element Analysis (FEA) and Reliability, Availability, Maintainability, Safety RAMS analysis.

EIN-SOF Solutions for Electronic Record & Document Management System (ERDMS)

Treating your documents the right way >>

Electronic Record & Document Management System (ERDMS) Partnership EMC2 Documentum

- Documentum Content Server
- Webtop Client
- Documentum Information Rights Management Services
- Documentum Retention Policy Services
- Documentum Transformation Services
- Documentum Administrator
- Documentum Developer Studio
- Process Builder
- Captiva InputAccel Server

Our Added Value

Development of new philosophy in process design

- Process design is based on using Document Type Attributes instead of using Structured Data Types;
- This kind of process design is cheaper than others because there is no need for purchasing Structured Data Types licenses;
- Some workflow information are bound to the document, therefore making the workflow more traceable;
- The process design is extremely flexible and adaptable to changes in the structure of the organization;
- This new intuitive approach in process design can be easily adapted to legal requirements and organizational rules and policies.

Best practice experience in creating an Organizational structure

- Enables definition of flexible an Organizational structure that makes the assignment of workflow actors fully automatic;
- Enables optimal connection between different organizational units and groups;
- Enables the selection of workflow actors to be based on multiple criteria;
- Enables flexible workflow dynamics. Organizational structure can be modified in Documentum Administrator without having the need to modify the processes in Process Builder.

Development of custom modules tailored to the specific needs of the client

- Interface that is easily adapted;
 - Development of cross-platform libraries;
 - Development of custom solution used for process flow automation, control and monitoring;
 - Expanding the features of Documentum Process Builder;
 - Development of custom made features for integrating workflow reporting of multiple workflows;
 - Custom expansion of Documentum Search features;
 - Expanding the Documentum capabilities for exporting data, allowing support of different additional formats (pdf and various industry standard data exchange formats);
- Customization of template style sheets.

We help our clients to define their strategy for implementation of Electronic Record & Document Management System paying special attention on following points:

- Start with the end in mind;
- Undertake an audit of existing processes, number of records / documents;
- Estimate implications of business and compliance objectives;
- Clearly analyze the gaps;
- Look at mandatory requirements;
- Identify required changes to existing business processes;
- Simulation and improvement of existing processes, not just a technology layer;
- Analysis of existing skill levels of the solution's end-users ;
- Identify level of integration required for the front office and the business line;
- Assessment of the required ERDMS functionality;
- Identify cultural issues or barriers, ways of working, operational environment.

Implementation Methodology

Ein-Sof as a Problem Solving Company has built its portfolio on high quality solutions, committing to quality guarantying methodologies for implementing ERDMS to be used in conjunction with the organization's favored PMM.

Our management and development teams are certified in ISO 9001, CMMi L3, PMI PMBOK, RUP, V-CYCLE. We deploy our best practices in your favor.


Application Framework

- EMC Documentum (DFC, BOF, WDK)
- Databases (Oracle, MS-SQL)
- Microsoft, Linux
- Development (C, C++, VB, .NET, Java)

Successful Implementations of Electronic Record & Document Management System (ERDMS)

- Government of Republic of Macedonia (16 Ministries and 5 governmental institutions)
- The Power Supply Company of Macedonia-Research and Development department
- Drug Biro - Ministry of Health of Republic of Macedonia
- Employment Service Agency of the Republic of Macedonia.

We provide local support through our offices in Germany, France, USA



Business Strategy for
Implementation of Electronic
Record & Document
Management System

EIN-SOF Electronic Medical Records Management System

Experience and Expertise in Hospital Information Systems

Ein-Sof has extended experience in development and implementation of e-Healthcare solutions, built on a synergetic system that combines the medical expertise of doctors with the technical expertise of software developers.

The system includes a team of doctors with variety of expertise in clinical operations, as well as in consultancy for Hospital Information Systems. This team is involved throughout the design and the implementation activities, providing the software solution with excellence in performance and information management.

Bringing together the best of both worlds, it is a flexible structure that guarantees implementation of best practices in the operation of the hospital information system and provides valuable advice to the client.



The future of e-Healthcare
is already here >>





Advantages of Electronic Medical Records Management System

- Paperless operations:

The Electronic Medical Record management reduces the paper load and significantly increases the security and the reliability of the patient medical records;

- Automated billing:

Linked with the full tracking of the administered services, treatments, and medications, ensures no loss of information and full financial responsibility;

- Online collaboration:

Enables extending the scope of medical collaboration beyond the hospital premises, improving the quality of service for the patients without additional mailing or traveling expenses;

- Expiry date management:

Ensures correct handling of medications and other medical materials;

- Stock management:

Provides efficient management of the in-house stocks of medical and other supplies;

- Reduced redundancy:

Reduces or eliminates the volume of redundant and unproductive tasks, improving the overall efficiency of the hospital staff;

- Scheduling:

Improves the organization, the planning and the utilization of the critical hospital resources;

- Cost effectiveness:

All of the advantages listed above contribute to the lowering of the operational cost.

EIN-SOF Custom Solutions

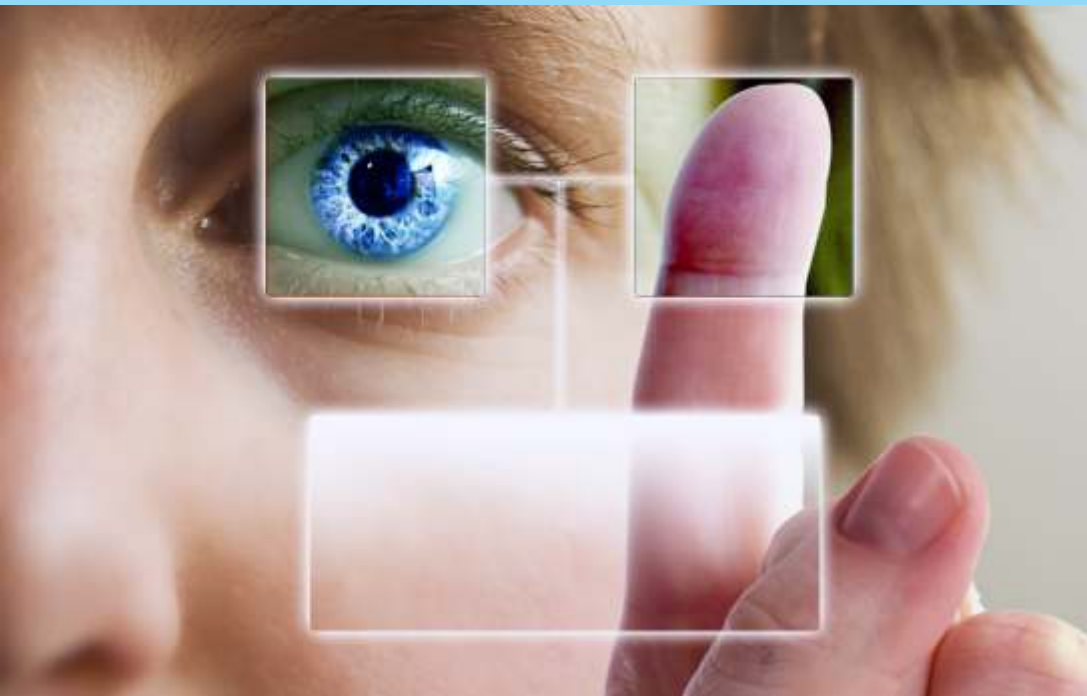
Throughout the years of servicing the needs of our clients, operating in various areas, we have accumulated knowledge from a wide variety of industry and service sectors.

We have used this valuable asset to create a matrix of know-how that is the foundation of our Custom Solutions department.



We know exactly what you need >>

EIN-SOF has the expertise to provide the accurate solution to your needs, however specific they may be



- System Integration:

The components of a solution alone are not enough - integrating them into an operational ensemble is the key ingredient in the recipe for the solution, and that is where our experience in integrating system of various complexities will come to your aid.

- ERP solutions implementation:

The management of the information and the functions of your organization is a complex task. An ERP solution will promote seamless integration of your operational processes, but only if implemented with a high level of quality and commitment. We are experienced in implementing ERP solutions from different vendors in a wide range of industries.

- Outsourcing:

We provide outsourcing services to a number of our partners, appearing as sub-contractor in highly complex projects, therefore enabling the contractor partner to devote its attention to its core business, following the premise that everyone should be doing what he/she knows best to do.

- IT Consulting:

Whether you are planning on establishing a new IT structure in your organization, or you need to re-evaluate an existing setup, we will provide you with expert on-site IT consulting, analysis and auditing services anywhere in the world.

- Business process analysis:

Our experience in business process analysis for the purposes of Information System design and implementation, allows us to bring improvements in your business operations, implementing best practices and increasing your efficiency and productivity.

Stay connected anytime anywhere >>



EIN-SOF Messaging and Collaboration Platform - Iris

IRIS is a custom corporate and messaging system, representing a powerful platform for collaboration within an organization. It integrates all means of communication like: IM, SMS, Telephony, VOIP. Thus providing the companies the total control on communication expenses and fast, reliable and secure centralized communication solution on all organizational layers.

The combination of powerful features combined with intuitive usage and low administration demands make it a valuable tool in increasing your organization's mobility and efficiency.

Benefits of having Iris Corporate Messenger in your organization

- Secure Transfer of any data in your network and protected by Firewall
- Plug-in architecture with already developed Project Management modules.
- Outlook integration
- You can connect any smart/IP phones and have Free communication within your Company
- Save on maintenance costs.



Stay connected anytime anywhere >>

Iris features

Bulletin / Bulletin message - All contacts within company (grouped and ungrouped) represent one massive bulletin. Bulletin has special place for display on the screen and has own status indicators. Additionally Special Users can send bulletin messages which are broadcasted to all contacts.

Groups - Groups represent company's organizational units. There are default groups built in, those are used for internal use and have special purpose. The administrator panel enables the administrator to operate groups. Iris groups have nothing to do with LDAP groups and they operate like separate entity. But putting LDAP groups into IRIS groups is transparent and if company already has some grouping into LDAP it's possible to migrate the groups into IRIS Groups.

Contacts - Contacts are organized in groups and they bring attributes. Some attributes are predefined (administrator set) and personal (user set). Both personal and administrative attributes are stored on the RDB once they are set. Administrator attributes are exclusively set by system administrator. They include Display name, username and password, user picture, user details and system related data and privileges.

Search - You can search contacts by their display name or put additional department filter.

Communication - All data from client to server and vice versa obeys SIP signaling. Standard register messages are passed from one to another point. Communication layer is based on SIP implemented by RFC.

SMS - Iris SMS communication is being done on server based standard GSM modem. Since it operates with standard SIM card, and all sending is server controlled, company can predict their investment in SMS feature. Charging per person is also avoided since all charge comes on one number, on one SMS card.



Making
digital world
more human >>

EIN-SOF Digital Media Communications Solutions

We deliver digital media communication solutions that drive maximum business performance to our clients worldwide.

Our Added Value

- 18 years of experience in Multimedia
- hundreds of websites, more than 80 CD/DVD-ROMs and company presentations
- several international awards in the first few years as the industry leader in Europe
- team of highly proficient website designers, search engine optimization consultants, online marketing consultants, innovative graphic designers, website design architects and highly experienced business consultants
- excellent references in different industries
- complete end-to-end solutions, delivered on time
- constantly exploring new technologies to create more consumer-relevant communications.

Multimedia

We offer a wide spectrum of multimedia services that will enhance the effectiveness of your communication.

- Interactive CD / DVD Rom Presentation
- Web Design and Development
- Animation Services
- Audio/Video production
- Graphic Solutions

Internet Marketing

We establish a lead generation system for our clients, and enable you to be found online by qualified prospects and convert more of those prospects into sales. Also, we have valuable experience in different industries: Loans, Insurance, Investments and Travel.

- PPC Campaign Management
- SEO On site and Off site optimization
- Brand building through Social Media



Making
digital world
more human >>

E-Services

We deliver fully customized e-business platforms (B2B, B2C, B2G, B2E, C2B etc ..) that best suits your requirements, build your business on a global scale and enhance relationships with your customers.

References

- B2B matchmaking based project for Ibank (USA) that manages over 350.000 members
- B2C application for a German company OPC, overnight parcel courier
- The first B2B portal in Macedonia, Fashionmk.com
- Business Portal for managing financial services for EOS-Matrix (member of Europe Network)
- Multimedia Corporate Presentations for Johnson Controls
- Internet Portal for Agency for Foreign Investments of the Republic of Macedonia
- E-register for registrations for the Government of the Republic of Macedonia
- Internet Portal for fashion designers from South - Eastern Europe
- Internet Portal for promotion of Macedonian musicians, supported by the Ministry of culture
- Multimedia package (multimedia CD-Rom, video, brochure, poster) for Promotion of Agroturism of Prespa.



Your TECHNOLOGY JEWEL

CONTACT US

Ein-Sof USA
65 Enterprise
Aliso Viejo, CA 92656
T +949 330 6403
T +949 330 6402
E usa@ein-sof.com
W www.ein-sof.com

Ein-Sof Germany
Wiesenstrasse 51,
40549 Düsseldorf, Germany
T +49 211 563 73854
E deutschland@ein-sof.com
W www.ein-sof.com

Ein-Sof Germany
Pfalzburgerstrasse 33
10717 Berlin, Germany
T +49 302 6077122
E deutschland@ein-sof.com
W www.ein-sof.com

Ein-Sof France
9 allée de Longchamp
F-92150 Suresnes
T + 331 409 99077
E france@ein-sof.com
W www.ein-sof.com

Ein-Sof Macedonia
Skupi 3a, 1000 Skopje, Macedonia
T +389 2 30 90 300
F +389 2 30 83 670
E contact@ein-sof.com
W www.ein-sof.com